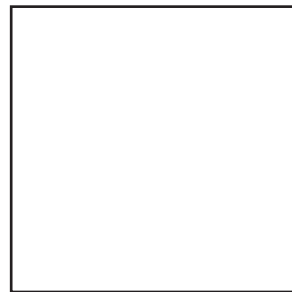


IMPORTANT NOTES:

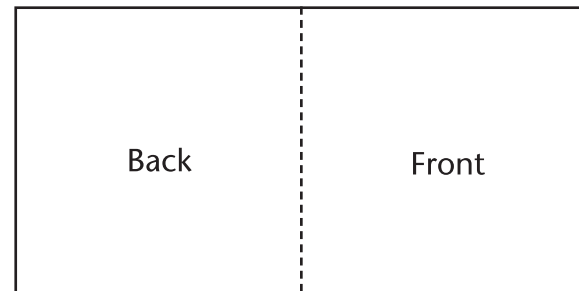
- Solid lines indicate trim, dotted lines are folds
- All documents must include .125" bleed (except for CD face)
- All documents must have cut, fold & registration marks colored "registration"
- Keep type at least .125" from cut marks (safety margin)



Two Panel Insert

4.75" x 4.75"

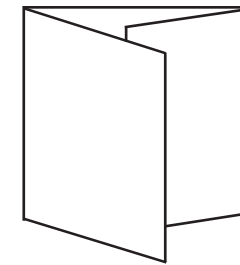
(5" x 5" includes .125" bleed on all sides)



Four Panel Insert

9.5" x 4.75"

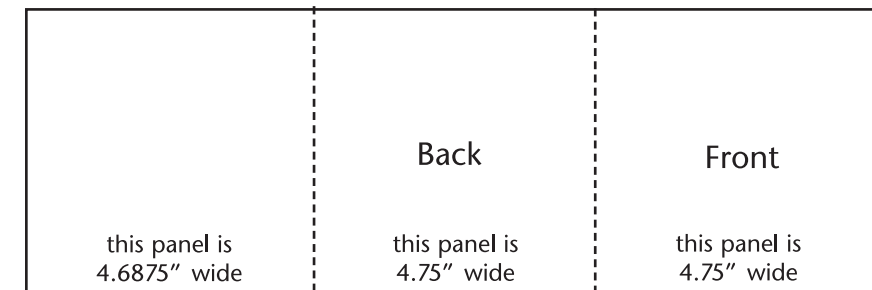
(9.75" x 5" includes .125" bleed top, bottom & outside of panels)



Six Panel Fold

14.1875" x 4.75"

(14.4375" x 5" includes .125" bleed top, bottom & outside of panels)



The backprint for this template is the exact opposite



Tray Card

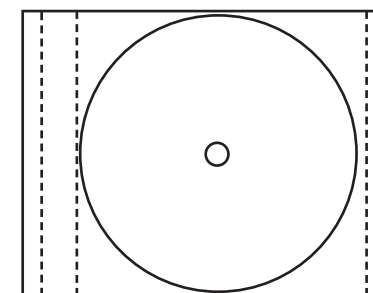
5.9063" x 4.625"

(spines are .25" each)

(6.1563" x 4.875" includes .125" bleed on all sides)

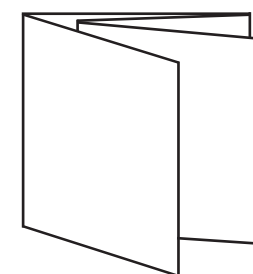
Tray Card Backprint

applicable only with clear tray



This is the live area visible when the CD is open - approx. 4.75"

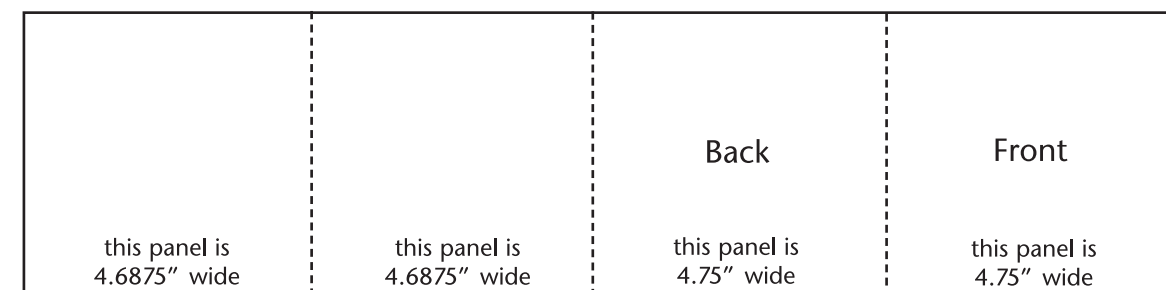
This area shows through the front of the CD, to the left of the booklet - approx. .375"



Eight Panel Double Fold

18.875" x 4.75"

(19.125" x 5" includes .125" bleed top, bottom & outside of panels)



The backprint for this template is the exact opposite